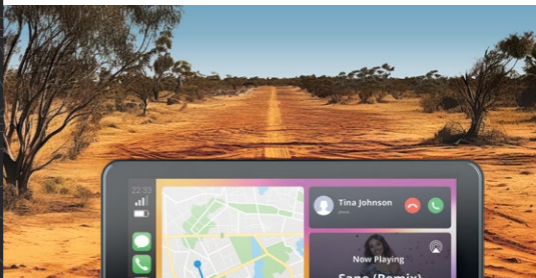




Hema

HR-1

7" Smart Monitor with Dual Channel DVR



3

HEMA
PROTECT

3-YEAR
WARRANTY

User Manual

hema.com.au | hema.co.nz

CONTENTS

CAUTIONS.....	4
WARNING.....	5
MICRO SD CARD WARNING.....	5
1.0 INTRODUCTION.....	6
2.0 PACKAGE CONTENTS.....	7
3.0 PRODUCT OVERVIEW.....	8
4.0 MICRO SD CARD INSTALLATION.....	10
5.0 PRODUCT INSTALLATION.....	10
5.1 WINDSCREEN SUCTION MOUNT.....	11
5.2 3M ADHESIVE SUCTION MOUNT.....	12
6.0 GPS INSTALLATION.....	13
7.0 REAR-CAMERA INSTALLATION.....	14
7.1 Rear-camera WIRING.....	15
7.2 Rear-camera CONNECTION.....	15
7.3 Rear-camera FEATURES.....	16
8.0 POWER CONNECTION.....	16
8.1 AUTO POWER ON/OFF.....	17
9.0 MICRO SD CARD.....	17
9.1 FORMATTING INSERTED MICRO SD CARD.....	17
9.2 MICRO SD CARD SPECIFICATIONS.....	17
10.0 HOME SCREEN.....	18
10.1 DASH CAMERA.....	20
10.2 APPLE CARPLAY.....	21
FOR FIRST-TIME CONNECTION.....	21
10.2.1 IPHONE SET-UP.....	21
10.3 ANDROID AUTO.....	23

11.0 AUDIO OUTPUT.....	25
11.1 HR-1 Speakers.....	25
11.2 Car Audio 26.....	
11.3 FM TRANSMITTER.....	28
12.0 VEHICLES WITH BLUETOOTH FUNCTIONALITY.....	29
13.0 SETTINGS.....	30
14.0 REVERSING GUIDELINES SETTINGS.....	31
15.0 TROUBLESHOOTING.....	32
16.0 USING THE HEMA MAPS HR-1 GPS NAVIGATOR.....	33
16.1 Switching the HR-1 on and off.....	33
17.0 SIGNING IN FROM YOUR HR-1.....	34
18.0 DOWNLOADING THE HEMA 4WD MAPS PACKAGE 2022.....	37
19.0 THE MAIN PAGE & FLIPSIDE PAGE.....	38
MAIN PAGE.....	39
20.0 WARRANTY.....	43
WARRANTY TERMS AND CONDITIONS.....	43
INDEMNITY.....	44
WARRANTY AND WARRANTY DISCLAIMER.....	45
LIMITATIONS OF HEMA LIABILITY.....	47
WHERE TO GET MORE HELP.....	49
HOW TO CONTACT US.....	49
MAPS/SOFTWARE SUPPORT:.....	49
NOTES.....	50

CAUTIONS

- Please ensure you are using your system within your country's road laws.
- Please make sure you are familiar with your local-road legislation before use.
- The time and date need to be set before you start recording.
- The notifications provided by this system are to be used as a guide only.
- Please drive according to the actual conditions on the road.
- The system is for non-commercial use only, and within the limits permitted by the relevant laws.
- Avoid using this product in the vicinity of any devices that emit radio interference such as microwave ovens.
- Please note that it is normal for this product to get warm during use.
- Please ensure you maintain your focus on the road and not on the monitor while driving.

WARNING

- Always power this product using the supplied charger.
- Never dismantle this product.
- Do not dispose of this product in fire.
- Disposal of this product should observe local regulations.

MICRO SD CARD WARNING

- This product can only be used with Micro SD Cards, Class 10 or above with 32GB to 256GB storage capacity. The Micro SD card is not included and will need to be purchased separately.
- Please format your Micro SD card before use. See Section 8.1 on page 19 for details on how to format.

NOTE:

1. Formatting the Micro SD card will delete all information on the inserted Micro SD Card.
2. The HR-1 does not support multi-touch on the navigation menu. Please use the keys on the screen for navigation.

1.0 INTRODUCTION

The 7" Smart Monitor with Dual Channel DVR enables your smartphone to be seamlessly connected via Bluetooth and Wi-Fi for hands-free operation while driving. It also comprises a built-in front Dash Camera and a rear camera to facilitate hassle-free driving and navigation.

Please read through these instructions before attempting to install this product. For the latest manual and product updates, please visit our website at:

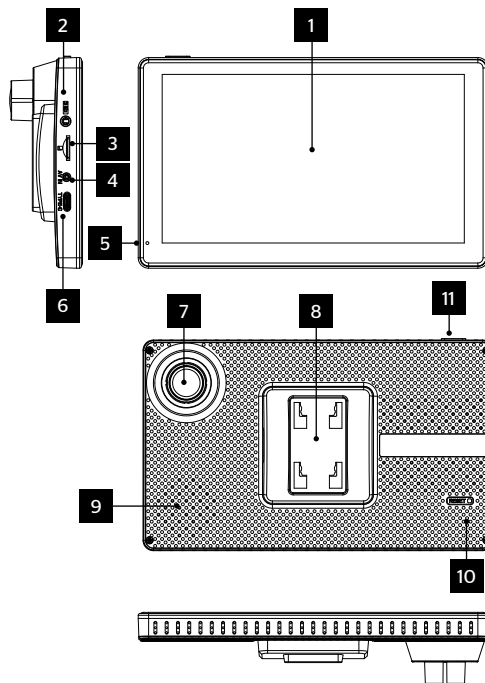
www.hema.com.au

2.0 PACKAGE CONTENTS

1. Smart 7.0' Monitor x1.
2. FHD Rear-camera with 8m Cable x1.
3. 3M Adhesive Mount x1.
4. Magnetic-mount Holder x1.
5. GPS Antenna x1.
6. User Manual x1.
7. Suction Mount x1.
8. Quick Start Guide x1.
9. Anti Glare Protector x1.

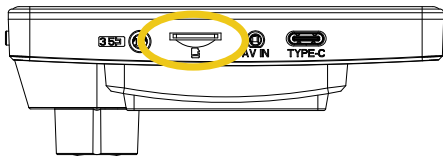
3.0 PRODUCT OVERVIEW

1. Display Screen.
2. GPS Antenna input.
3. Micro SD card slot.
4. Rear-camera input.
5. Microphone.
6. Type-C connector (for power supply).
7. Front camera lens.
8. 3M adhesive/magnetic mount.
9. Speaker vent.
10. Reset button- press this button to restart the device.
All pre saved information will be lost.
11. Power button-long press to power on/off. Short press to turn on/off display. Recording will continue.



4.0 MICRO SD CARD INSTALLATION

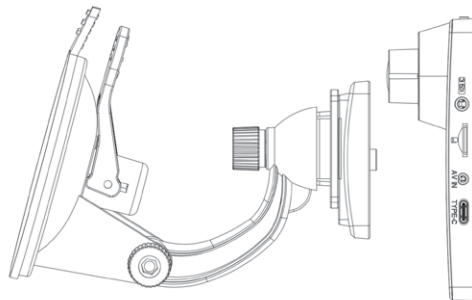
Please insert the memory card into the Micro SD Card slot with the chip contact surface facing down. Insert it until you hear a click sound.



5.0 PRODUCT INSTALLATION

There are two mounting options available for installation:

1. Windscreen suction mount.
2. 3M adhesive mount.



5.1 WINDSCREEN SUCTION MOUNT

1. Attach the two pieces of the mount together and lock into place.
2. Adjust the angle of the mount.
3. Clean the windscreen area where the suction mount is to be mounted.
4. Pull the suction-cup lever up to release suction.
5. Press the suction mount on the windscreen and lock it by pressing the suction-cup lever down until it snaps into place.
6. Snap the HR-1 onto the magnetic-mount holder.

5.2 3M ADHESIVE SUCTION MOUNT

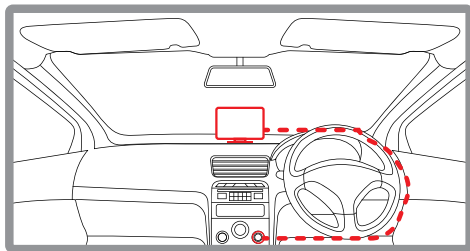


Figure: 1

1. Attach the magnetic-mount holder and 3M adhesive mount together and lock into place.
2. Clean the area on the dashboard where the mount is to be placed.
3. Remove the 3M tape at the bottom of the mount holder.
4. Place the mount on the cleaned surface and press it firmly for two minutes.
5. Snap the HR-1 onto the magnetic-mount holder.
6. Adjust the height and view angle of the HR-1 using the knob at the back of the 3M adhesive mount.

MOUNTING NOTES

1. Make sure the camera lens is within the range of the windscreen wiper so that there is a clear line of view when it rains.
2. Do not touch the camera lens. Fingerprints on the lens will result in unclear videos or photos. If your photos or videos are blurred, this may be rectified by cleaning the lens gently with a microfibre cloth.
3. Please use only the included charging cable to power the Smart Monitor. Other cables may not work or may damage the product.

6.0 GPS INSTALLATION

1. Clean the front windshield with the microfibre cloth and glass cleaner. This will ensure a stronger bond between the adhesive and the glass.

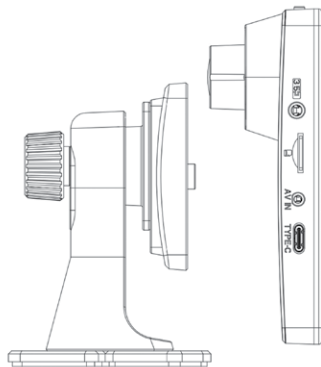


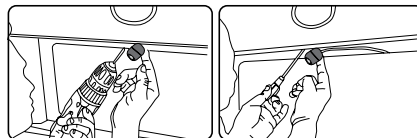
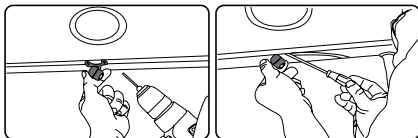
Figure: 2

2. Connect the GPS Antenna to the GPS Port of the HR-1 while it is powered off.
3. Peel the red adhesive covering off of the GPS Antenna.
4. Mount the GPS Antenna. The GPS Antenna should be mounted away from the HR-1 monitor to reduce noise interference.

*GPS reception may be affected by interference from the vehicle's windshield, particularly those treated with an anti-UV protective coating, or built-in defroster.

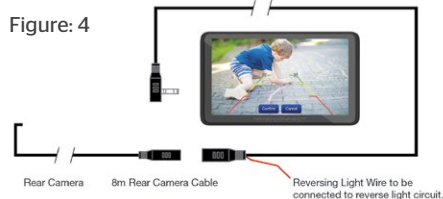
7.0 REAR-CAMERA INSTALLATION

1. Select a flat and central location near the number-plate lamp at the rear of your vehicle to mount the camera.
2. Attach tape to the bracket of the rear-camera to hold the camera in position while installing and drill two small holes, one for the first screw and the second to run the rear-camera cable through.
3. Use a screwdriver to fasten the first screw but leave it loose enough to adjust the rear-camera.
4. Insert the rear-camera cable through the intended drilled hole and check the installation position.
5. Mark a position suitable for the second screw and drill a small hole.
6. Fasten the second screw and tighten both screws securely.



7.1 REAR-CAMERA WIRING

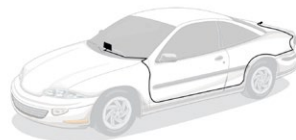
Figure: 4



To enable the Smart Monitor to display the Rear-camera view when the vehicle is engaged in reverse gear, the red Reversing Light Wire must be connected to the reverse-light circuit. Otherwise, the Rear-camera will not work in conjunction with the reverse gear.

7.2 REAR-CAMERA CONNECTION

Figure: 5



Connect the Rear-camera cable from the Smart Monitor to the Rear-camera as shown above.

7.3 REAR-CAMERA FEATURES

After successfully installing and connecting the rear-camera to the main-front unit, the rear-camera images will be displayed on the HR-1 display screen.

Both front and rear-camera images will now be displayed on the HR-1 display screen and the two cameras will begin recording simultaneously and automatically when the Smart Monitor is powered on via your vehicle's ignition.

8.0 POWER CONNECTION

- Only use the supplied 12/24V power adaptor to power the HR-1.
- Once the HR-1 is securely installed on the windscreen or dashboard, plug the 12/24V power adaptor cable into the vehicle's 12/24V power port.
- Run the cable along the vehicle's dashboard and plug the Type-C connector into the HR-1. See Figure 1 or Figure 2.

8.1 AUTO POWER ON/OFF

When the HR-1 is correctly installed and connected to the vehicle's 12/24V power port, it will automatically power up and start recording when the vehicle's ignition is turned on.

NOTE:

1. The HR-1 is designed to be powered only by the supplied DC power plug. Its internal battery is **NOT** designed for primary use.

9.0 MICRO SD CARD

9.1 FORMATTING INSERTED MICRO SD CARD

It is highly recommended to format the Micro SD card before use.

9.2 MICRO SD CARD SPECIFICATIONS

The quality of Micro SD card you use has a great impact on the stability of video recording.

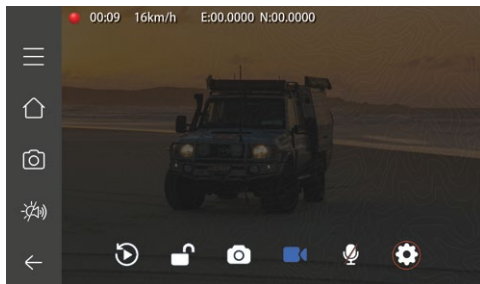
It is recommended to use Micro SD cards from these brands for best results: ScanDisk, Kingston, Toshiba and Samsung.

Speed certification must be at least Class 10 with a minimum capacity of 32GB and maximum 128GB.

Formatting the Micro SD card will delete all previously saved information on the inserted card and prepare the card for use with the Smart Monitor.

To format the Micro SD card, please follow the steps below:

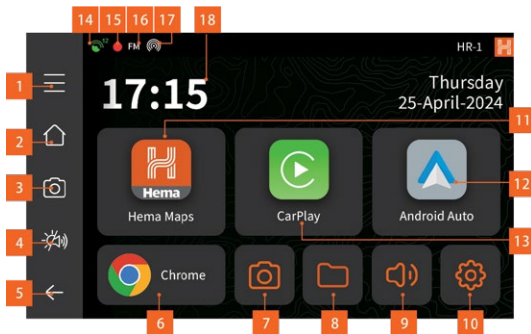
1. Press the DVR button.
2. Press the settings button.
3. There will be prompt asking to stop recording, press CONFIRM.
4. Press the 'Format' button. Your Micro SD card will now begin to format.



10.0 HOME SCREEN

1. Touch to show recent opened apps
2. Touch to back to home screen
3. Touch to enter dash cam view.
4. Touch to adjust speaker volume and screen brightness.
5. Return to last step.

6. Touch to open Chrome browser.
7. Touch to enter dash cam menu.
8. Touch to open file manager.
9. Touch to enter audio output channels.
10. System settings.
11. Touch to enter Hema Maps App.
12. Touch to open Android Auto mode.
13. Touch to open CarPlay Mode.
14. Indicator of GPS signal reception status, the number shows how many satellites it has been connected.
15. Dash camera video recording status. (Red on, Grey off)
16. FM transmitter working status. (Highlight on, Grey off)
17. WiFi hotspot working status. (Highlight on, Grey off)
18. Date and time display.

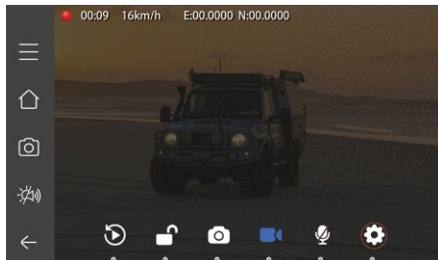
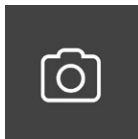


10.1 DASH CAMERA

After the Micro SD card is successfully inserted and formatted, the system will start recording.

The dot will turn red indicating that the device is in recording mode.

Touch the Dash-Camera button to enter into the camera interface as shown in the following image.



1. **Video playback:** Touch to playback the recorded video.
2. **Lock file:** Touch to lock the one-minute recorded video file and protect it from being overwritten.
3. **Camera:** Touch to take photo.
4. **Record:** Touch to stop/start recording, A highlighted blue button indicates that recording is in progress.

5. **Audio recording:** Touch to enable or disable audio recording.
6. **Setting:** Touch to enter dash camera's setting menu.

NOTE:

1. Swipe left or right on screen to change front and rear-camera views.

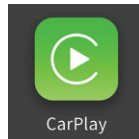
10.2 APPLE CARPLAY

FOR FIRST-TIME CONNECTION

Touch the Apple CarPlay icon to show the connecting instructions. After first connection, it will show 'Connected' and display the Apple CarPlay menu.

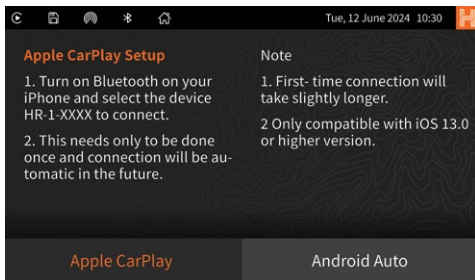
10.2.1 IPHONE SET-UP

1. Touch the Apple CarPlay icon on the display screen.
2. Use Bluetooth to pair your iPhone with the device.
3. After pairing, select CarPlay when prompted.
4. The Smart Monitor will now automatically connect to your iPhone via Wi-Fi.



NOTE:

1. First-time connection will take slightly longer.
2. Only compatible with iOS13.0 or higher version.

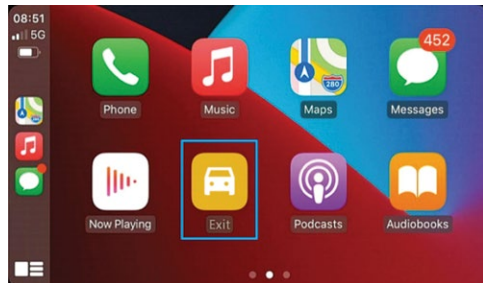


- Please turn on Bluetooth and Wi-Fi on your iPhone.
- Pair your iPhone with the Smart Monitor.
- After successful Bluetooth pairing, Wi-Fi will automatically connect between the HR-1 and your iPhone.

From now on, connection between the HR-1 and your iPhone will be automatic each time the HR-1 is powered on when your iPhone is within close proximity.

Press Exit to return to the HR-1 Menu.

10.3 ANDROID AUTO

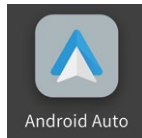


FOR FIRST-TIME CONNECTION

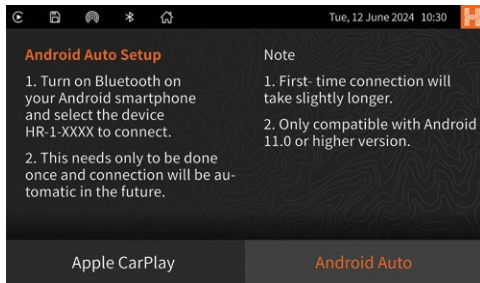
Touch the Android Auto icon to show the connecting instructions. After first connection, it will show Connected and display the Android Auto menu.

ANDROID AUTO SET-UP

Please ensure that you have downloaded the latest Android Auto app from the Google Play Store to your smartphone.



Use Bluetooth to pair your Android phone with the Smart Monitor.

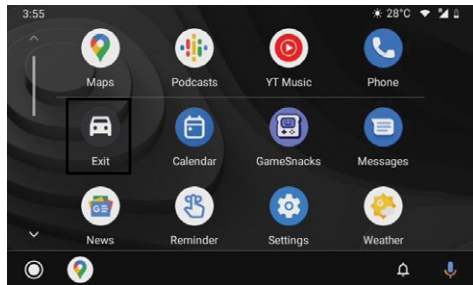


NOTE:

1. First-time connection will take slightly longer.
2. Only compatible with Android 11.0 or higher version.

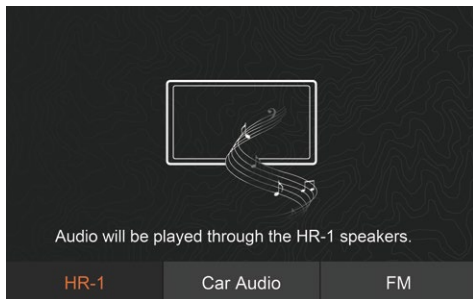
From now on, connection between the HR-1 and your Android phone will be automatic each time the HR-1 is powered on when your Android phone is within close proximity.

Press Exit to return to the HR-1 Menu.



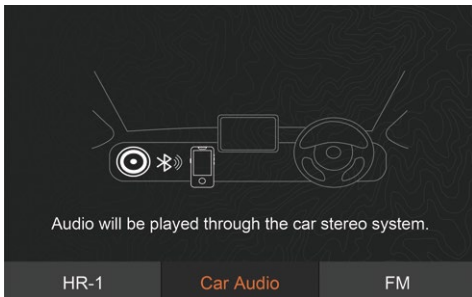
11.0 AUDIO OUTPUT

11.1 HR-1 SPEAKERS



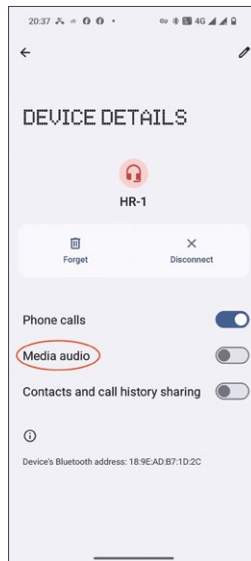
Select 'HR-1' to play audio through the device's built-in speaker.

11.2 CAR AUDIO



Select 'Car Audio' to play audio either through your smartphone speaker or the car-stereo speakers if your smartphone is connected via Bluetooth to the device. This choice only needs to be performed once to maintain the same selection.

Under Android Auto mode, in the Bluetooth settings for the HR-1 on your smartphone, it is suggested to disable the 'Media Audio' so that the default audio is via the HR-1 built-in speaker when connected to your smartphone. This only applies to Android Auto mode.

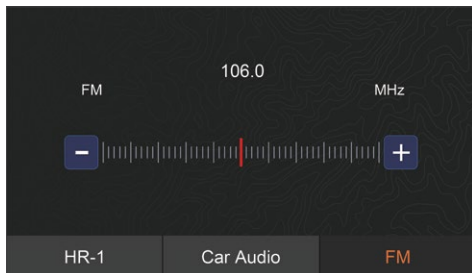


11.3 FM TRANSMITTER

Select 'FM' button to enter into the FM Transmitter settings.

The FM Transmitter can be used to transmit audio from the HR-1 to your vehicle's built-in stereo speakers.

When you turn on the FM Transmitter, the HR-1 will be muted. You will have to match the frequency of the FM Transmitter to a free frequency channel on the vehicle head unit to hear the audio from the HR-1.



FM TRANSMITTER SET-UP

1. Turn on the FM Transmitter. The HR-1 built-in speaker is now muted.
2. Turn on the vehicle's radio and select a free frequency channel.
3. On your HR-1, select the frequency you have chosen on your radio.

4. Once the frequencies are matched, the HR-1 will automatically playback its audio through the vehicle's built-in stereo speakers.

12.0 VEHICLES WITH BLUETOOTH FUNCTIONALITY

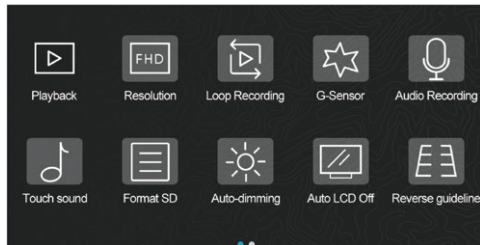
FM TRANSMITTER STATUS	MUSIC/CALLS INITIATED/CALLS RECEIVED/ CALLS INITIATED WITH SIRI/GOOGLE/ NAVIGATION INSTRUCTIONS
FM Transmitter enabled.	Played through vehicle's audio system via FM Transmitter.

FM TRANSMITTER STATUS	MUSIC	CALLS INITIATED	CALLS RECEIVED
FM Transmitter disabled and Android phone is connected to vehicle's Bluetooth and HR-1.	Play through vehicle's audio system or HR-1.	Played through vehicle's audio system.	Played through vehicle's audio system.
		Played through vehicle's audio system via HR-1.	Played through vehicle's audio system via HR-1.
FM Transmitter disabled and iPhone is connected to vehicle's Bluetooth and HR-1.	Played through vehicle's audio system or via HR-1.	Played through vehicle's audio system.	Played through vehicle's audio system.
		Played through vehicle's audio system via HR-1.	Played through vehicle's audio system via HR-1.

NOTE

1. For Android smartphones, data calls such as Whatsapp cannot be initiated via the vehicle's audio system when connected to HR-1.
2. Android smartphone users will need to download the Android Auto app from the Google Play Store.
3. Calls and navigation functions can be initiated by saying 'Hey Google' or 'OK Google' and 'Hey Siri'. HR-1 will use your smartphone data for all CarPlay and Android services.
4. Not all apps on your smartphone are accessible via the HR-1. It will depend on iOS and Android terms and conditions.

13.0 SETTINGS




SETTING	OPTION	DEFAULT
Camera Resolution	1080P Front +1080P Rear. 720P Front +720P Rear.	1080P Front + 1080P Rear.
Loop recording	1min/3min/5min.	1min.
Audio recording	On/Off.	On.
G-Sensor	Off/Low/Mid/High.	Low.
Date and time	12hr/24hr.	12hr.
Auto LCD off	Always on/1 min/5mins.	Always on.
Auto-dimming	On/Off. Night Brightness. Start/End time.	On, 25%. Start-6.00am. End-6.00pm.

14.0 REVERSING GUIDELINES SETTINGS

Touch on the Reversing Guidelines button to enter into settings and calibration.

Touch the On or Off to switch guidelines on or off. When guidelines are turned off, they will not show on the display screen when the vehicle is in reverse gear.

To adjust the guidelines, touch [Calibration] to enter into calibration mode.

- Park the vehicle in the middle of the parking space.
- Touch and drag [] left or right to adjust the horizontal or vertical reversing guidelines to match with the parking space markings. After alignment, press Confirm.



15.0 TROUBLESHOOTING

PROBLEM	SOLUTION
Unable to start the device	Check whether the DC head of the 12V power cord is damaged or worn.
	Check whether the fuse of the power plug is disconnected or damaged.
No touch control response	Touch control is invalid during powering up of the device. Wait for the device to be powered on before using it.
	Check whether the touch control is damaged. Do not touch the display screen with any sharp object as the screen is easily scratched and damaged.

REMINDER

Please ensure that there is no obstruction between your smartphone and the device and that the Bluetooth and Wi-Fi signal communication is uninterrupted. Otherwise, the functions of the device cannot be used effectively.

16.0 USING THE HEMA MAPS HR-1 GPS NAVIGATOR

This guide will help you get started with the Hema Maps app that comes with your new HR-1 so you can get out and explore.

16.1 SWITCHING THE HR-1 ON AND OFF

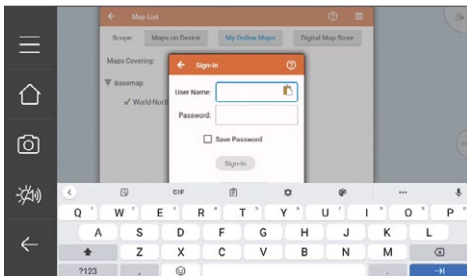
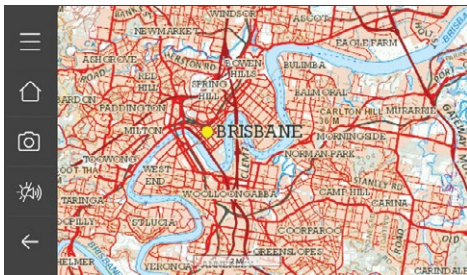
Registering your HR-1 to the Hema Maps Cloud: the first time you switch on your HR-1, you will be guided through the setup process by a Setup Wizard. This will help connect your HR-1 to the Internet and allow you to sign in to create your Hema Maps Cloud account.

The Hema Maps Cloud account grants you access to connect your HR-1 to the cloud.hemamaps.com services including trip planning, track recording, personalised waypoints, and POIs and syncing your information across multiple devices.

Included in your HR-1 is an optional 30-day Hema Maps free trial subscription.

17.0 SIGNING IN FROM YOUR HR-1

Sign In / Create a new account



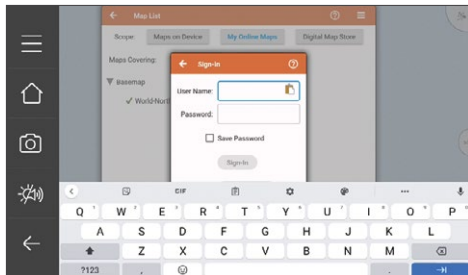
To start off, you will need to create a new account or sign in with an existing Memory-Map account.

To do so, tap on the map list icon on the bottom left of the screen.

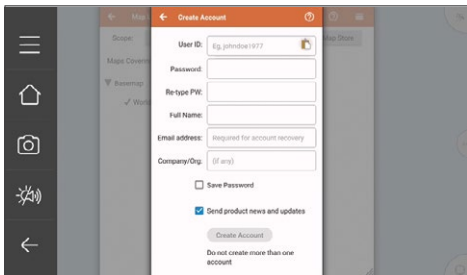
Then tap on the three horizontal lines on the top right of the screen.



And select "Account Sign-in".

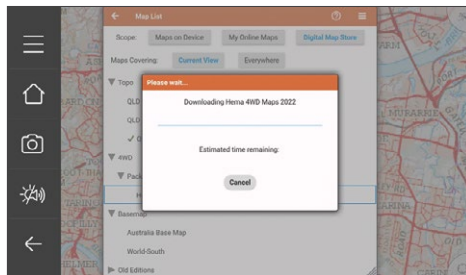
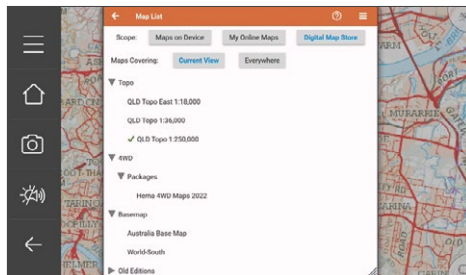


Sign in with an existing Memory-Map account or create a new account.



18.0 DOWNLOADING THE HEMA 4WD MAPS PACKAGE 2022

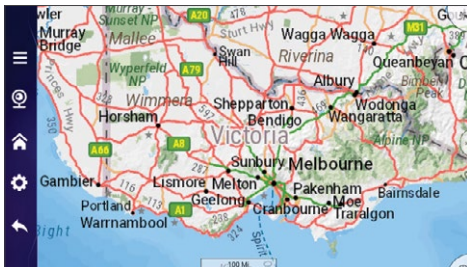
Once logged in, head to the “Digital Map Store” and select “Hema 4WD Maps 2022”.



Please be aware it is a big download: 2.8GB, which may take around 15 minutes on a broadband connection.

19.0 THE MAIN PAGE & FLIPSIDE PAGE

The app consists of two screens or pages, the Main page and the Flipside page. Examples are shown below:



Main Page



Flipside Page

MAIN PAGE

The Main page displays the current map, with your position shown by an indicator in the centre of the screen.

There are several icons which will perform certain tasks within the app.



Opens the overlays page, where you can:

- Have a look at your "Marks, Route and Tracks".
- Add new Marks, Routes or record a Track.
- Search a placename, overlay name or grid coordinates
- Import a GPX file
- Sync to the cloud



Navigates you to the Flipside Pages



Instantly displays your current location centered on the Main page. (If you have a valid position fix)



Opens the Main Menu, where you can:

- Edit Settings (Display options, GPS setup, Route settings, Account, Units etc)
- Edit the Layout of your icons
- Lock your screen
- More helpful information about the app



Opens the Map List for users to select other maps, for display on the Main Page

200 km

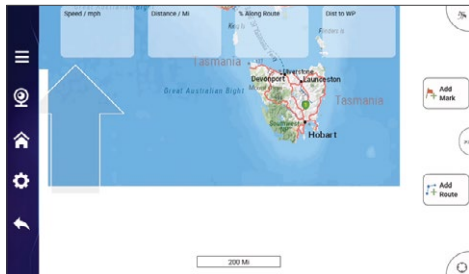
The scale bar shows an approximate distance depending on the current map and zoom

Flipside Page

The Flipside page has multiple sections to manage your statistics and contains an array of data fields showing various GPS parameters: Such as average speeds, altitude etc.



The content of these fields can be customised to suit your requirement, although the default layout and values are suitable for most people.



There are a few icons which will perform certain tasks within the app.



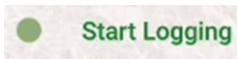
**Add
Mark**

Adds a waypoint of your current position on the map



**Add
Route**

Allows you to start building a route / trip



Start Logging

Starts tracking and leaving breadcrumb trails / snail trail

20.0 WARRANTY

WARRANTY TERMS AND CONDITIONS

Our goods come with guarantees that cannot be excluded under the Australian Consumer Law. You are entitled to a replacement or refund for a major failure and for compensation for any other reasonably foreseeable loss or damage. You are also entitled to have the goods repaired or replaced if the goods fail to be of acceptable quality and the failure does not amount to a major failure.

This warranty is provided in addition to your rights under the Australian Consumer Law. Directed Electronics Australia Pty Ltd (Directed Electronics) warrants that this product is free from defects in material and workmanship for a period of twelve months from the date of purchase or for the period stated on the packaging. This warranty is only valid where you have used the product in accordance with any recommendations or instructions provided by Directed Electronics.

This warranty excludes defects resulting from alterations of the product, accident, misuse, abuse, or neglect. In order to claim the warranty, you must return the product to the retailer from which it was purchased or, if that retailer is part of a national network, a store within that chain, along with satisfactory proof of purchase.

The retailer will then return the goods to Directed Electronics. Directed Electronics will repair, replace, or refurbish the product at its discretion. The retailer will contact you when the product is ready for collection. All costs involved in claiming this warranty, including the cost of the retailer sending the product to Directed Electronics, will be borne by you.

Phone: +61 03 8331 4800

Email: info@Hema.com.au

INDEMNITY

You agree to defend, indemnify and hold harmless Hema and its subsidiaries and affiliates from and against any and all claims, proceedings, injuries, liabilities, losses, costs and expenses (including reasonable legal fees), including but not limited to, claims alleging negligence, invasion of privacy, copyright infringement, and/or trademark infringement against Hema and its subsidiaries and affiliates, relating to, or arising out of your breach of any provision of these terms, your misuse of Hema products or its services, or your unauthorised modification or alteration of products or software.

WARRANTY AND WARRANTY DISCLAIMER

Hema has a limited warranty on whereby Hema warrants to you and only to you that Hema products will be free from defects in materials and workmanship for three (3) years from the date of your purchase (unless a longer warranty period is required by law). The specifics of this Hema limited warranty are covered in this manual. To the extent possible under governing law, other than the above product warranty for the Hema product, you understand and agree that the Hema products and services are provided on an 'instead of' basis.

Hema makes no warranty that the Hema products and services will meet your requirements or that use of the Hema products and services will be uninterrupted, timely, secure, or error-free. Nor Hema make any warranty as to the accuracy or reliability of any information obtained through the Hema (including third-party content), that any defects in the Hema will be corrected, or that the Hema products or services will be compatible with any other specific hardware or service. Further, Hema does not warrant that the Hema or the Hema servers that provide you with data and content are free of viruses or other harmful components.

Hema also assumes no responsibility for and shall not be liable for any damages caused by viruses that may infect your Hema.

In the event of any loss, damage, or injury, you will not look to Hema to compensate you or anyone else. You release and waive for yourself and your insurer all subrogation and other rights to recover against Hema arising as a result of the payment of any claim for loss, damage, or injury.

Hema equipment and services do not cause and cannot eliminate occurrences of certain events (Hema makes no guarantee or warranty) including any implied warranty of merchantability or fitness for a particular purpose that the Hema equipment and services provided will detect or avert such incidents or their consequences.

Hema does not undertake any risk that you or property, or the person, or property of others, may be subject to injury or loss if such an event occurs. The allocation of such risk remains with you, not Hema.

Other than the above product warranty for the Hema, its suppliers disclaim all warranties of any kind, whether express, implied, or statutory, regarding Hema products and services, including any implied warranty of title, merchantability, fitness for a particular purpose, or noninfringement of third party rights.

Because some jurisdictions do not permit the exclusion of implied warranties, the last sentence of this section may not apply to you. Hema hereby further expressly disclaims all liability for any claims for service failures that are due to normal product wear, product misuse, abuse, product modification, improper product selection or your non-compliance with all applicable federal, state or local laws.

This warranty and warranty disclaimer gives you specific legal rights, and you may have other rights that vary by state, province, or country. Other than as permitted by law, Hema does not exclude, limit, or suspend other rights you have, including those that may arise from the nonconformity of a sales contract.

For a full understanding of your rights, you should consult the laws of your state, province, or country. For our Australian customers: please note that this warranty is in addition to any statutory rights in Australia in relation to your goods which, pursuant to the Australian Consumer Law, cannot be excluded.

LIMITATIONS OF HEMA LIABILITY

Under no circumstances will Hema be liable in any way for any content, including, but not limited to, the loss of content, any errors or omissions in any content, or any loss or damage of any kind incurred in connection with use of or exposure to any content posted, emailed, accessed, transmitted, or otherwise made available via Hema liability for damages, especially for breach of duty or obligation, delay in performance, non-performance, or malperformance shall be precluded, except when these are due to negligent breaches of any significant contractual duty or obligation on the part of Hema. Any liability for negligence is limited to direct losses usually and typically foreseeable in such case. Should the claim for damages be based on wilful or grossly negligent breach of contractual duty or obligation on the part of Hema, the preclusion and limitation of liability mentioned in the preceding sentences

will not apply. The preceding preclusion and limitation of liability will also not apply to claims for damages arising out of loss of life, bodily injury, or health impacts for which Hema may be liable, or for non-contractual liability.

Some states and countries do not allow the exclusion or limitation of incidental or consequential damages, so the above limitation or exclusion may not apply to you. Additionally, this provision is not intended to limit Hema's liability in the event of Hema's wilful or intentional misconduct.



Hema Maps
Disclaimer



HERE End User
Terms and
Privacy Policy

WHERE TO GET MORE HELP

To ensure you get the best out of your HR-1, please register your device. You can also register for regular Hema-University webinars or access our online help guides at kb.hemamaps.com

HOW TO CONTACT US

Hardware/Troubleshooting support:

Please contact Directed Electronics Australia

Ph: +61 03 8331 4800

Email: service@directed.com.au

MAPS/SOFTWARE SUPPORT:

Please contact Hema Maps

Ph: +61 07 3340 0000

Email: info@hemamaps.com

Web: hemamaps.com/support



Hema Maps Pty Ltd. hema.com.au | hema.co.nz

Hema®, Hema Maps® and Map Patrol® are registered trademarks of Hema Maps Pty Ltd. HERE® is a trademark of Here Technologies LLC. © 2024 Hema Maps Pty Ltd. Hema and Hema Maps are used under license by Directed Electronics.

All Images, Information and Content are
Copyright © 2025 Directed Electronics Australia
Pty Ltd. All Rights Reserved.

DIRECTED
AUSTRALIA & NZ

